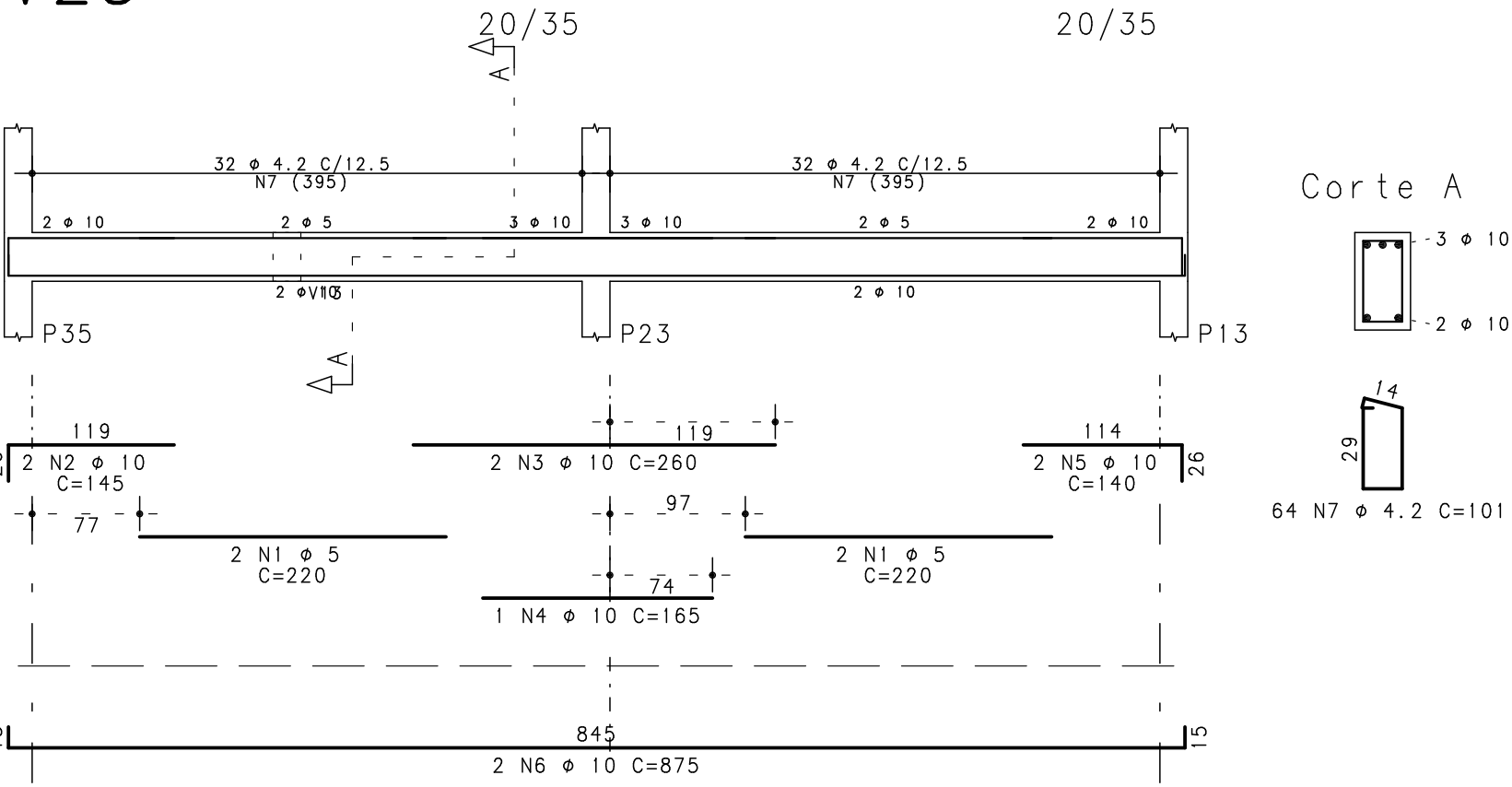
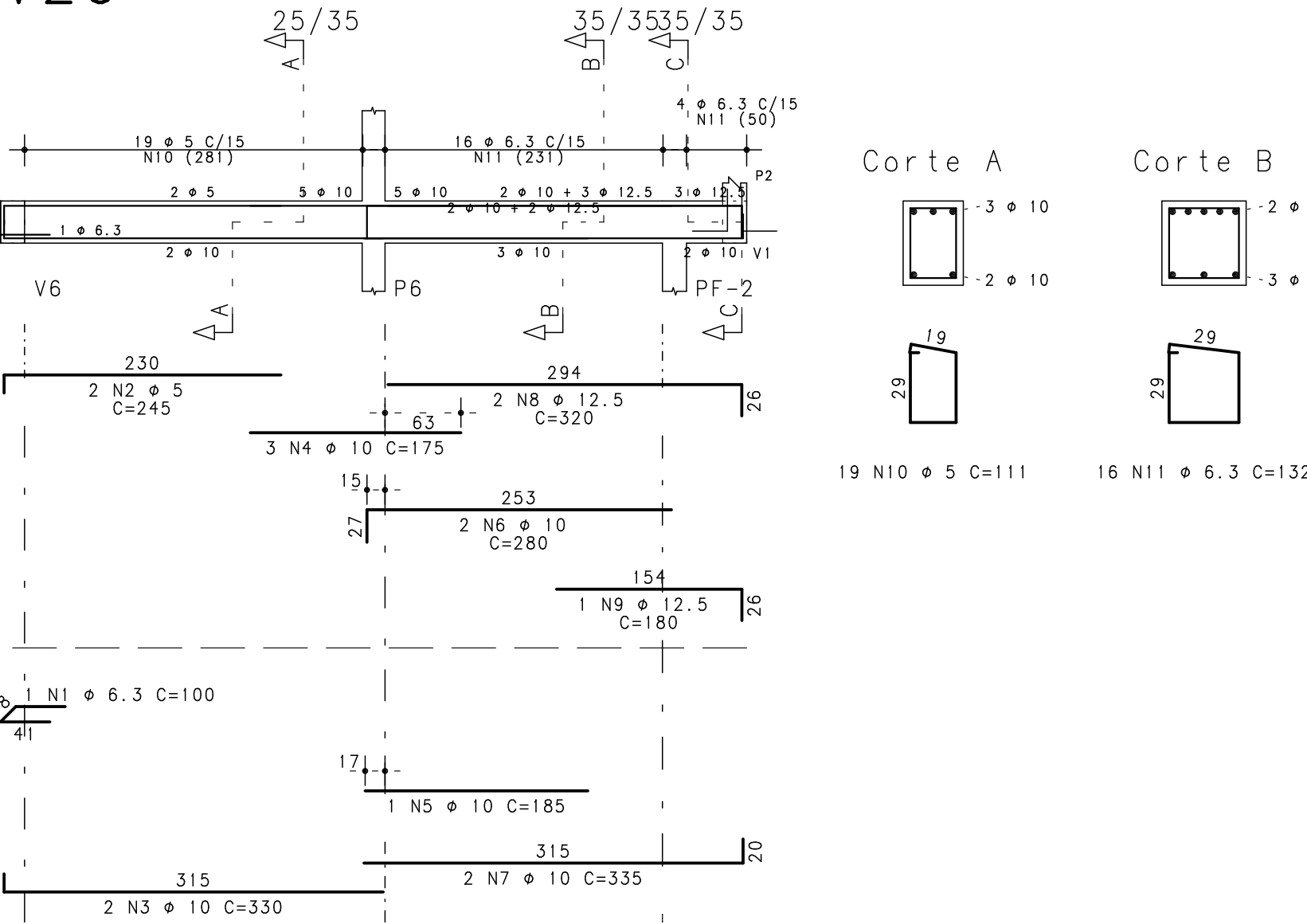


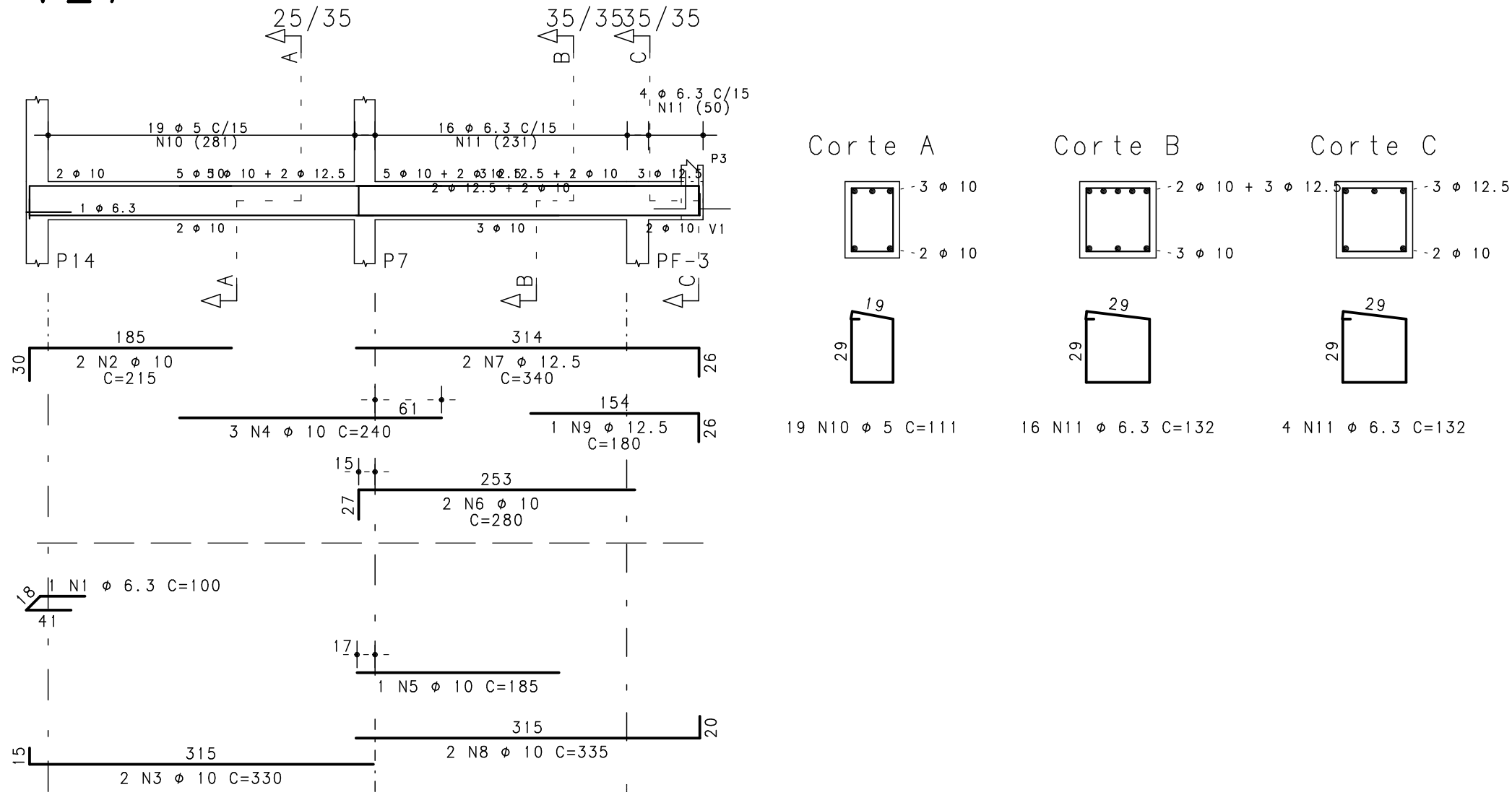
V25



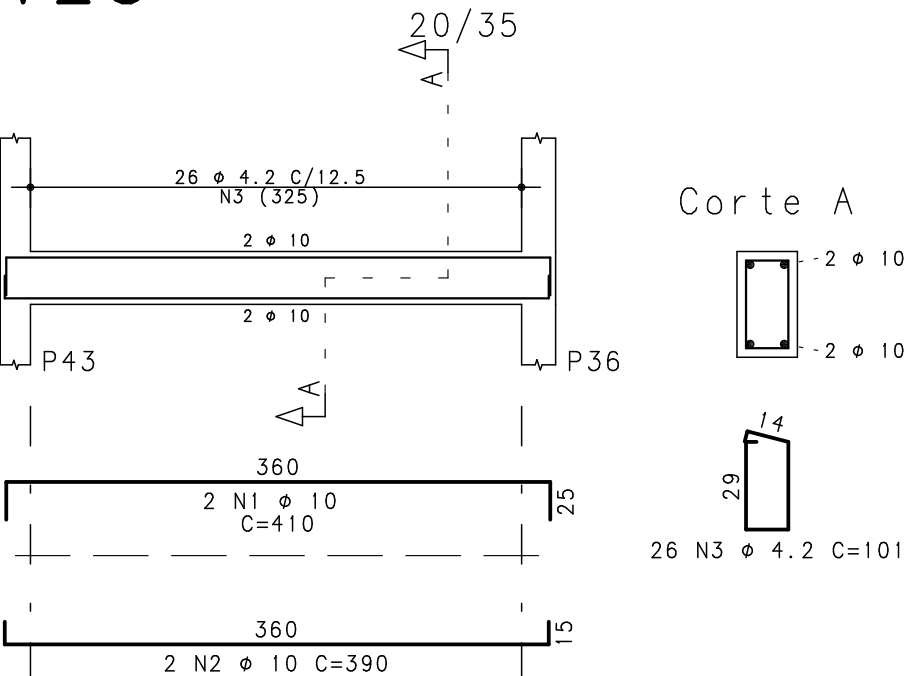
V26



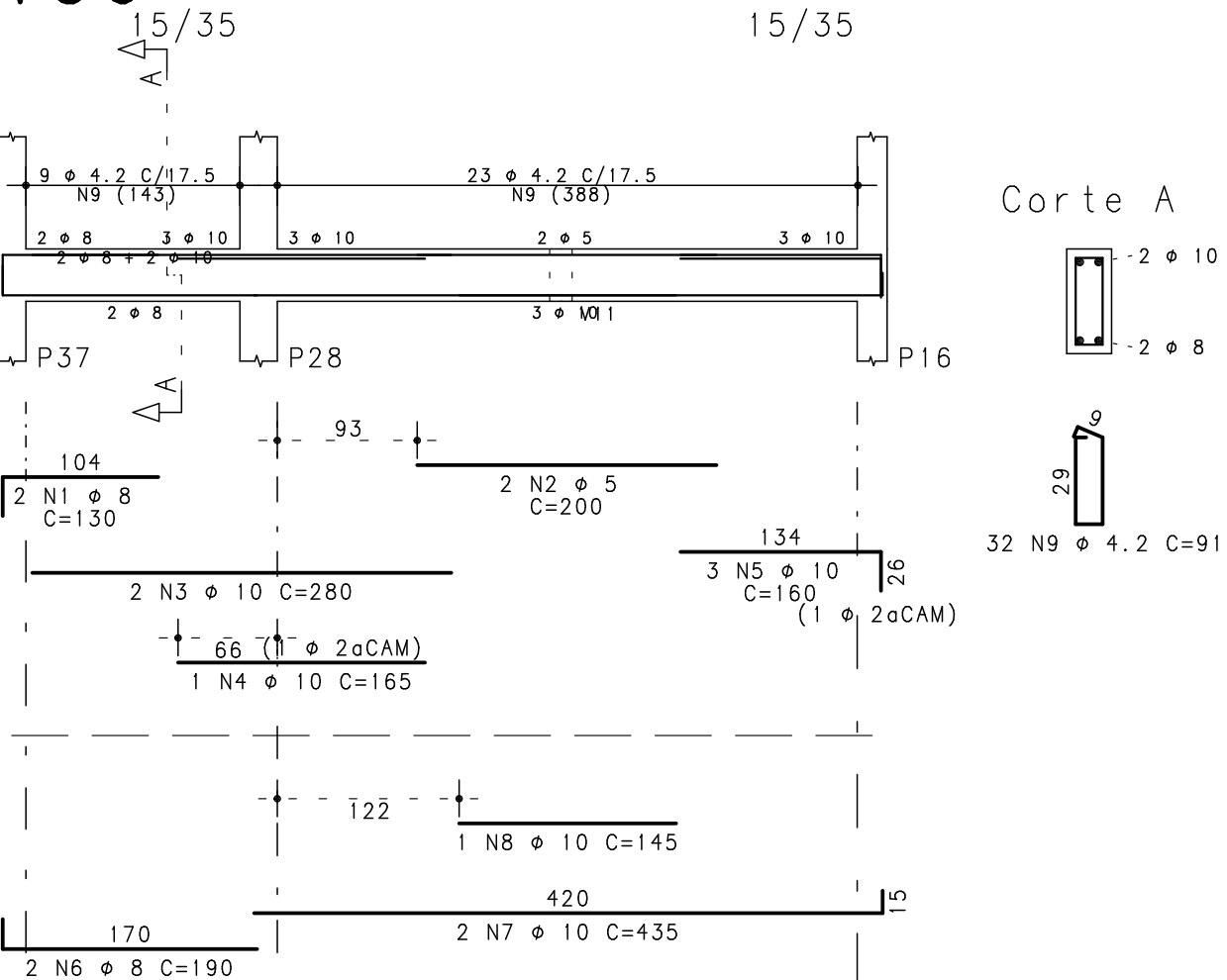
V27



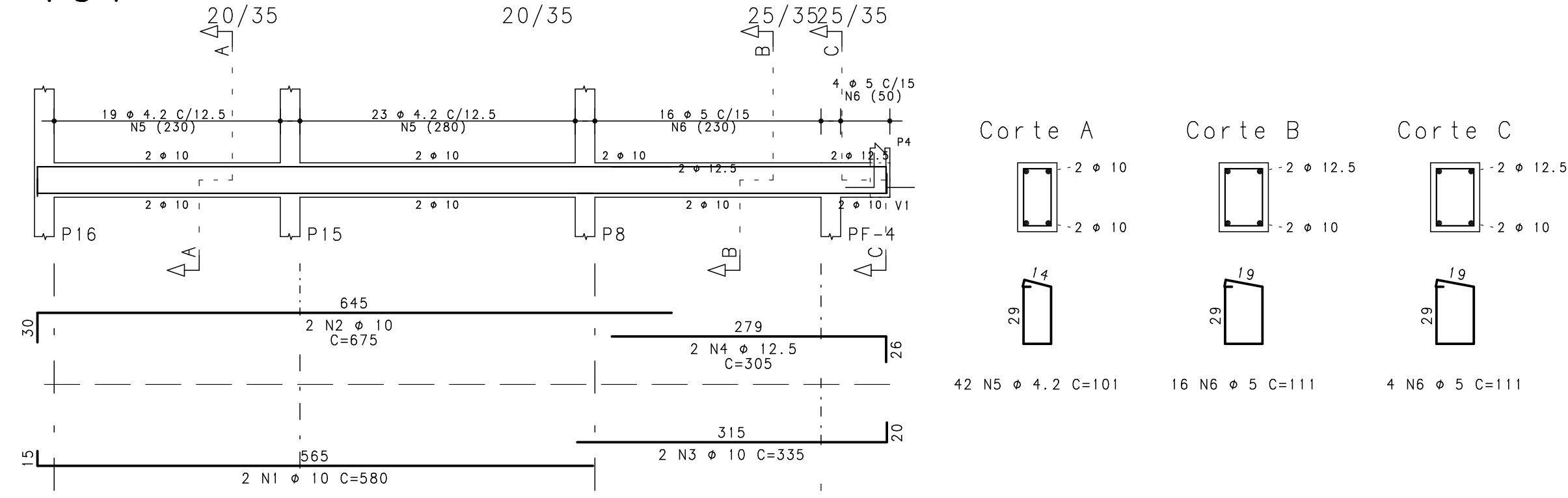
V28



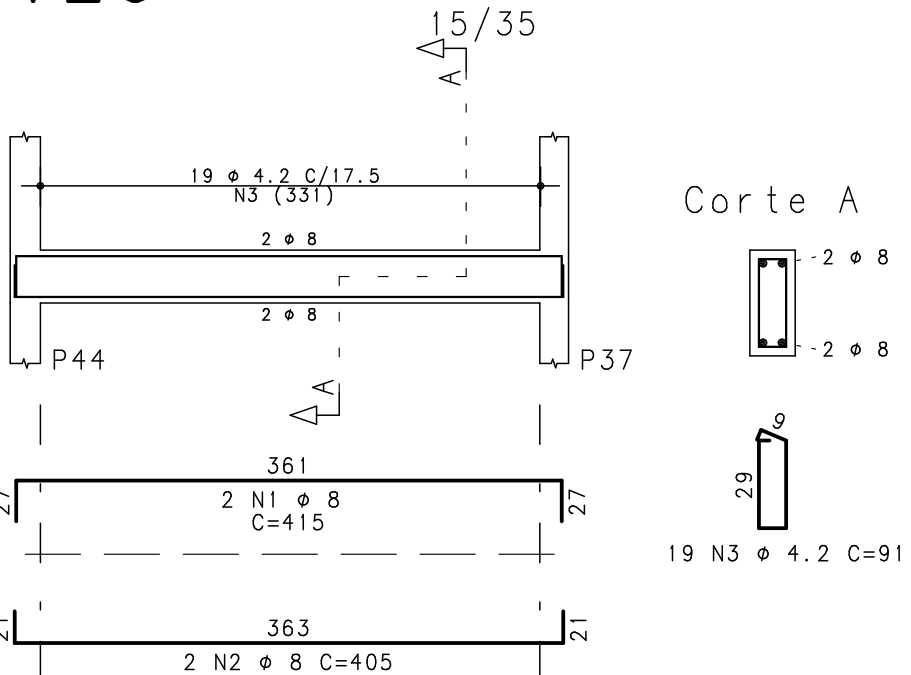
V30



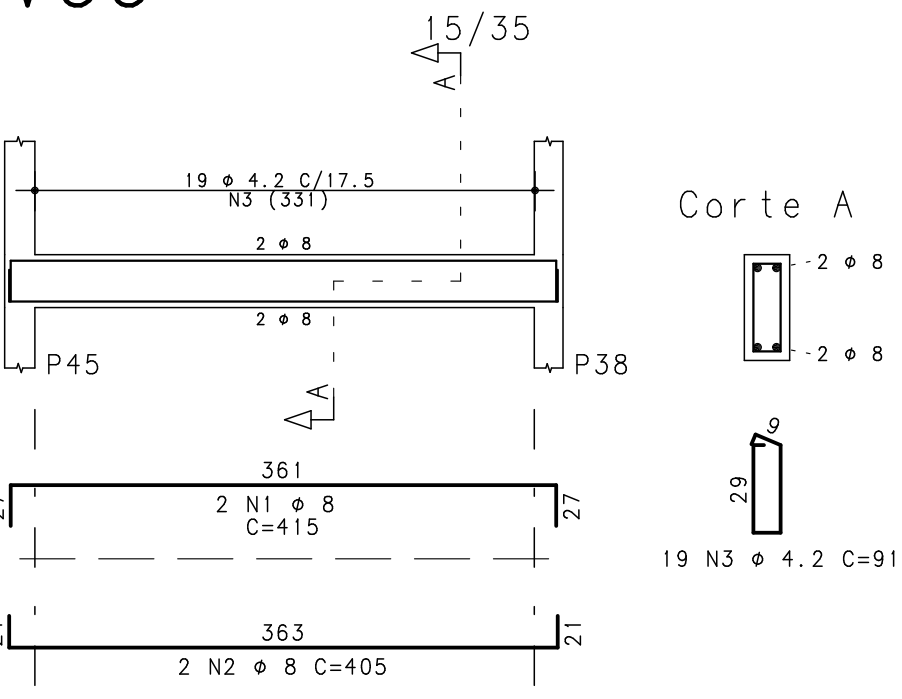
V31



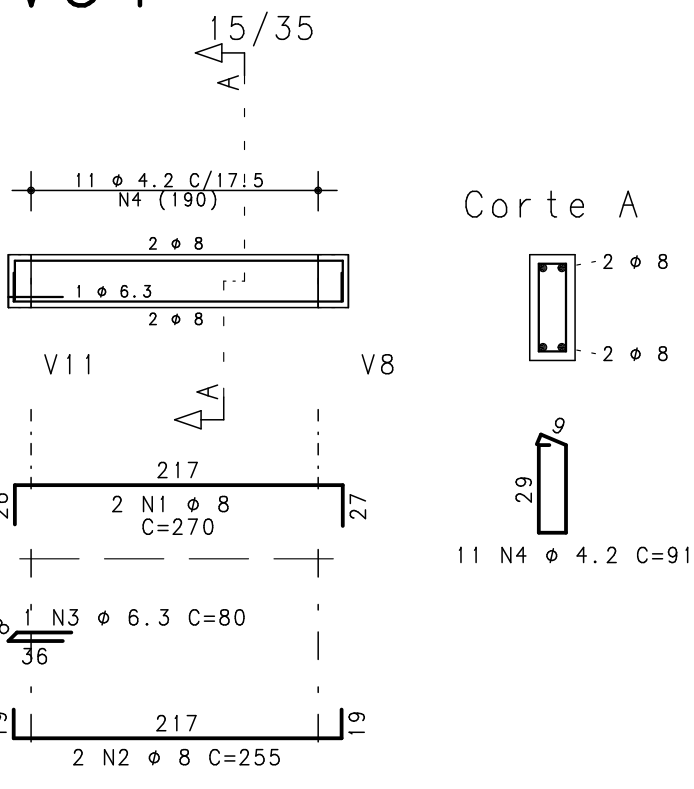
V29



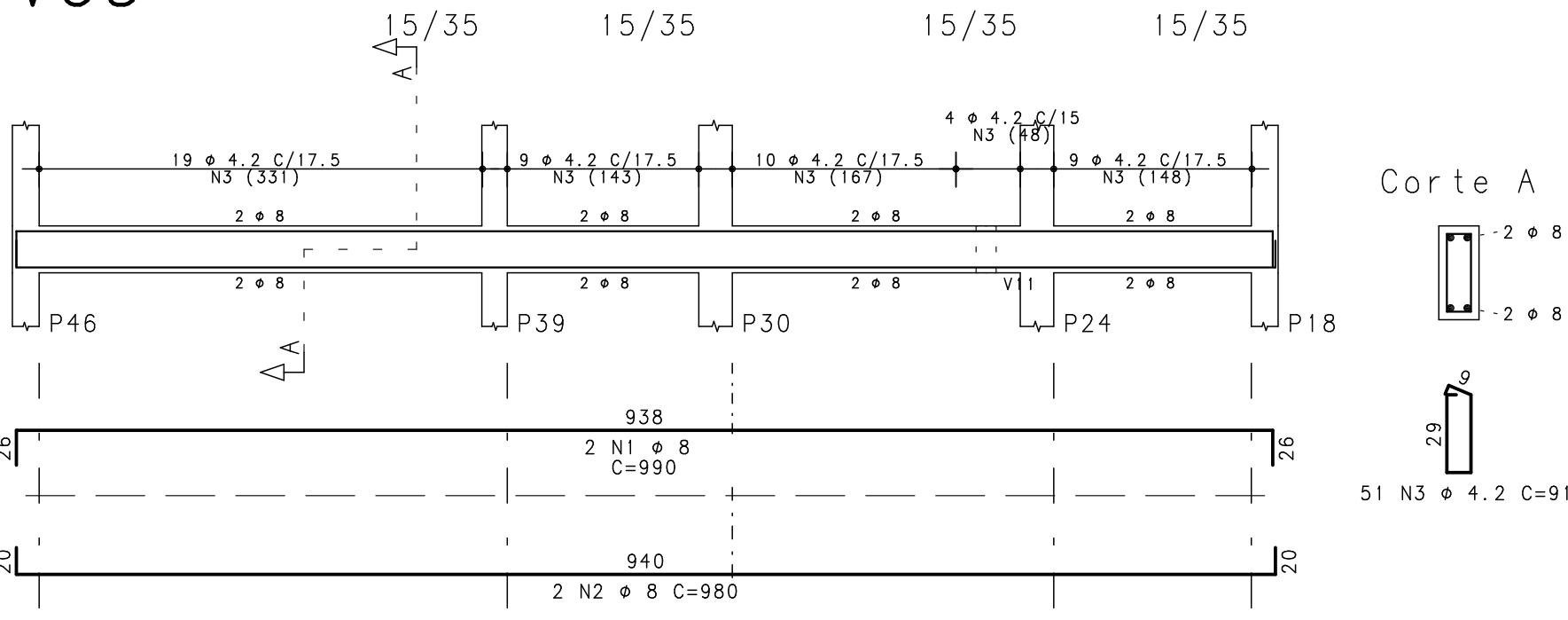
V33



V34



V35



	ACO	POS	BIT (mm)	QUANT	COMPRIMENTO	
					UNIT (cm)	TOTAL (cm)
V25	60B	1	5	4	220	880
	50A	2	10	2	145	290
	50A	3	10	2	260	520
	50A	4	10	1	165	165
	50A	5	10	2	140	280
	50A	6	10	2	875	1750
	60B	7	4.2	64	101	6464
V26	50A	1	6.3	1	100	100
	60B	2	5	2	245	490
	50A	3	10	2	330	660
	50A	4	10	3	175	525
	50A	5	10	1	185	185
	50A	6	10	2	280	560
	50A	7	10	2	335	670
	50A	8	12.5	2	320	640
	50A	9	12.5	1	180	180
	60B	10	5	19	111	2109
	50A	11	6.3	20	132	2640
	60B	12	5	2	81	162
	50A	13	10	6	72	432
V27	50A	1	6.3	1	100	100
	50A	2	10	2	215	430
	50A	3	10	2	330	660
	50A	4	10	3	240	720
	50A	5	10	1	185	185
	50A	6	10	2	280	560
	50A	7	12.5	2	340	680
	50A	8	10	2	335	670
	50A	9	12.5	1	180	180
	60B	10	5	19	111	2109
	50A	11	6.3	20	132	2640
	60B	12	5	2	81	162
	50A	13	10	6	72	432
V28	50A	1	10	2	410	820
	50A	2	10	2	390	780
	60B	3	4.2	26	101	2626
V29	50A	1	8	2	415	830
	50A	2	8	2	405	810
	60B	3	4.2	19	91	1729
V30	50A	1	8	2	130	260
	60B	2	5	2	200	400
	50A	3	10	2	280	560
	50A	4	10	1	165	165
	50A	5	10	3	160	480
	50A	6	8	2	190	380
	50A	7	10	2	435	870
	50A	8	10	1	145	145
	60B	9	4.2	32	91	2912
V31	50A	1	10	2	580	1160
	50A	2	10	2	675	1350
	50A	3	10	2	335	670
	50A	4	12.5	2	305	610
	60B	5	4.2	42	101	4242
	60B	6	5	20	111	2220
	60B	7	5	2	71	142
V33	50A	8	10	6	72	432
	50A	1	8	2	415	830
	50A	2	8	2	405	810
V34	60B	3	4.2	19	91	1729
	50A	1	8	2	270	540
	50A	2	8	2	255	510
V35	50A	3	6.3	1	80	80
	60B	4	4.2	11	91	1001
	50A	1	8	2	990	1980
	50A	2	8	2	980	1960
	60B	3	4.2	51	91	4641

RESUMO ACO CA 50-60			
ACO	BIT (mm)	COMPR (m)	PESO (kg)
60B	4.2	253	28
60B	5	87	13
50A	6.3	56	14
50A	8	89	35
50A	10	171	106
50A	12.5	23	22
Peso Total		60B =	41 kg
Peso Total		50A =	177 kg



Rua Quinze de Novembro, 553/405
Pelotas - RS - CEP 96015-000
Telefone: (51) 32291500
e-mail: fernando@simch.com.br
e-mail: paulo@simch.com.br

Fernando Petrucci Gigante
Eng. Civil - CREA-RS 45232

Paulo Rogério Maffini Simch
Eng. Civil - CREA-RS 78208

Rev	Data	Autor	Assunto
1			
0			

CONCRETO fck = 250 kgf/cm2	SOBRECARGA PREVISTA	OBRA N.º 0001
CLIENTE SECRETARIA DA SAÚDE-PELOTAS		DES. N.º
OBRA UBS TIPO 2 - VILA NOVA		013
TÍTULO Nível 50 Armadura das Vigas 3-4		REV. N.º 00
DATA 8/08/2015	ESCALA 1:50	COORD.
DESENHO UBS-50_-VIG-013-R00		ENG.º